



Applications Expertise Across the Cycle of Water

xylem
Let's Solve Water

Let's Solve Water

Xylem is focused on helping our customers solve their most challenging water issues... treating water to make it potable, transporting it to where it is needed, using it in the most efficient manner, testing and analyzing its qualities, and cleaning it after its many uses.

For over a century, Xylem's well-known global brands have served the water market.

We offer deep applications expertise from decades of leading innovation with products, systems and services that address the full cycle of water.

Our products are sold into more than 150 countries.

Working in true partnership with our customers and end users, we listen, learn and adapt to local environments, delivering solutions with more impact than ever before.

We all need clean water. That's why Xylem products can be found in every corner of the globe, often running 24 hours a day to ensure we have access to clean fresh water, and that wastewater is carefully transported and treated.

Xylem operates in two market segments:

Water Infrastructure - including the transportation, treatment and testing of water and wastewater.



Applied Water - encompassing water uses in residential and commercial building services, industrial and irrigation markets.



Xylem designs technologies that use less energy, reduce life-cycle costs and provide environmental benefits to our customers and the communities in which they operate.

Our market-leading brands enable the smarter use of water everywhere.

Xylem Brands:

- AADI
- A-C Fire Pump
- Alcon
- Bell & Gossett
- Bellingham + Stanley
- Domestic Pump
- ebro
- Leopold
- Flojet
- Flowtronex
- Flygt
- Global Water
- Godwin Pumps
- Goulds Water Technology
- Hoffman Specialty
- Jabsco
- Lowara
- Marlow Pumps
- McDonnell & Miller
- Midland-ACS
- OI Analytical
- PCI
- Red Jacket Water Products
- Royce Technologies
- Rule
- Sanitaire
- SI Analytics
- Standard
- Vogel
- Water Equipment Technologies
- WEDECO
- WTW
- YSI

Xylem is working to solve water in every market and application.

Xylem products, systems and services are integral to numerous customers as they work with water.

Public Utility - Water Treatment and Supply

- Powerful pumps draw raw water from well and surface water sources.
- Membrane and gravity media filtration systems purify or desalinate water.
- Ultraviolet (UV) and ozone disinfection solutions render waterborne pathogens harmless.
- Analytical instruments measure and monitor water quality, level and flow, ensuring efficient plant operation.

Residential

- Circulators and boiler controls provide residential heating and cooling.
- Durable well, sewage and drainage pumps serve homes not connected to public water supply networks.
- Reliable pumps and accessories provide safety and comfort for activities including home and garden, leisure marine and recreational vehicles.

Commercial

- Pumps equipped with intelligent controls provide water for HVAC and utility service for commercial buildings of any size, and for other commercial applications including fountains and water parks.
- Fire pump packages provide water supply for emergency use, and sewage pumps transport wastewater from commercial buildings.

Construction

- A wide range of durable pumps provide dewatering service for the toughest construction sites.

Food & Beverage

- Hygienic pumps provide safe handling in dairy, winery and food operations.
- Membrane filtration systems treat water for food processing applications.
- Pumps and accessories serve beverage, syrup and juice dispensing applications.

Industrial

- Pumps, valves, heat exchangers, manifolds and controls serve specialized industrial applications under harsh conditions.
- Scalable integrated treatment solutions enable water reuse.
- Analytical instruments provide data to control industrial processes.
- Membrane filtration technologies produce high-purity process water.

Agricultural

- Pump systems supply water for crop irrigation and livestock operations.
- Submersible pumps, mixers and hydroejectors support aquaculture.
- Biological treatment solutions, pumps and aerators treat and transport agricultural wastewater.
- Analytical instruments monitor ground and irrigation water quality, level and flow.

Government

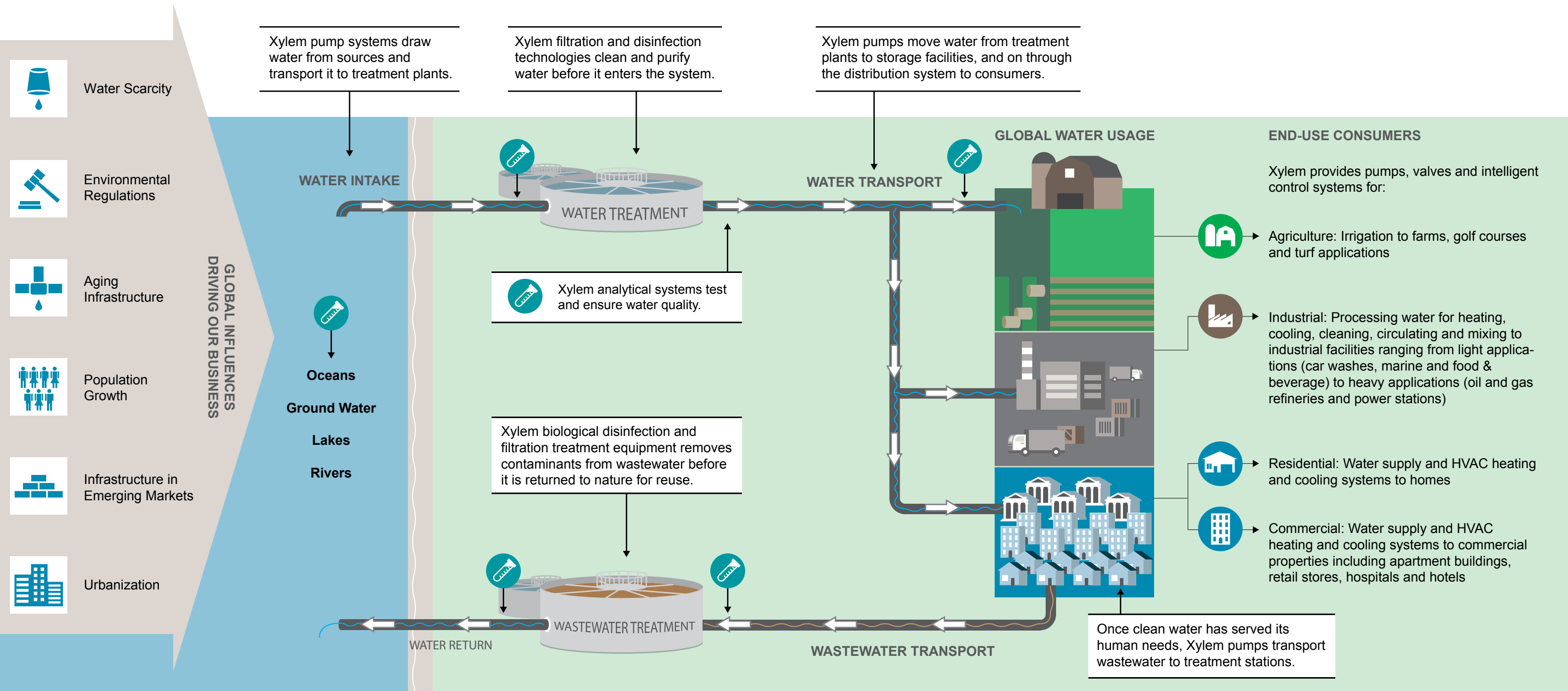
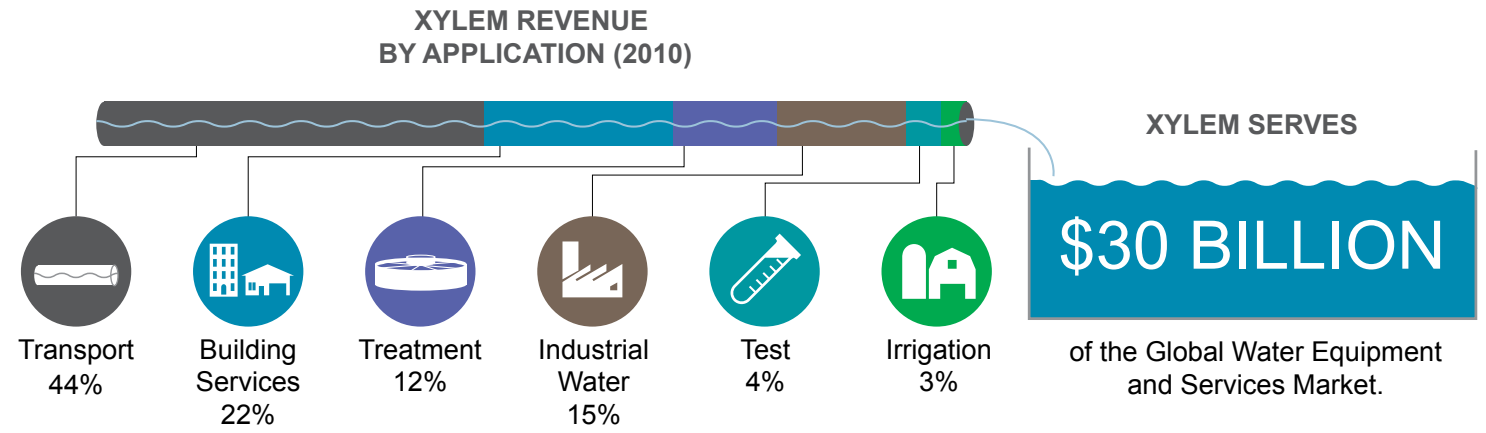
- Sensors, measuring and monitoring instruments provide critical data for environmental, oceanographic, hydrographic and climate research.
- Process instrumentation, sensors and monitoring systems provide service in water resource and pollution monitoring applications.

Public Utility - Wastewater

- Submersible pumps transport wastewater from water users to lift stations and on to treatment facilities.
- Submersible pumps and mixers, clarifiers, media filtration and monitoring and control equipment enable wastewater treatment and sludge processing.
- Advanced aeration, sequence batch reactor, and membrane bioreactor systems are used for biological wastewater treatment solutions.
- Ozone and UV disinfection and membrane filtration systems re-purify water.

Xylem in the Cycle of Water

Transporting, testing, analyzing and treating water. These are the essential building blocks of Xylem's deep connection with water - pumping it from its source, making it fit for every conceivable human use and cleaning so that it may be returned to the environment and reused again.



Xylem | 'zīləm| 1) The tissue in plants that brings water upward from the roots; 2) a leading global water technology company.

We're 12,000 people unified in a common purpose: creating innovative solutions to meet our world's water needs. Developing new technologies that will improve the way water is used, conserved, and re-used in the future is central to our work. We move, treat, analyze, and return water to the environment, and we help people use water efficiently, in their homes, buildings, factories and farms. In more than 150 countries, we have strong, long-standing relationships with customers who know us for our powerful combination of leading product brands and applications expertise, backed by a legacy of innovation. For more information on how Xylem can help you, go to xylem.com.



Xylem Inc
1133 Westchester Avenue, White Plains, NY 10604, USA
Tel +1 914 323 5700

© 2011 Xylem Inc.

www.xylem.com